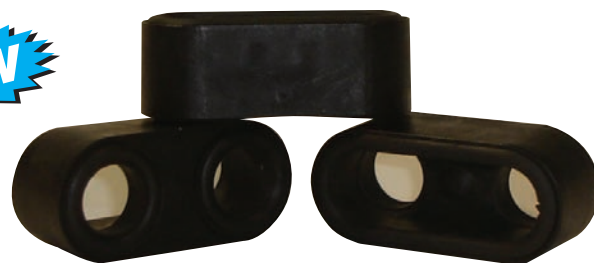
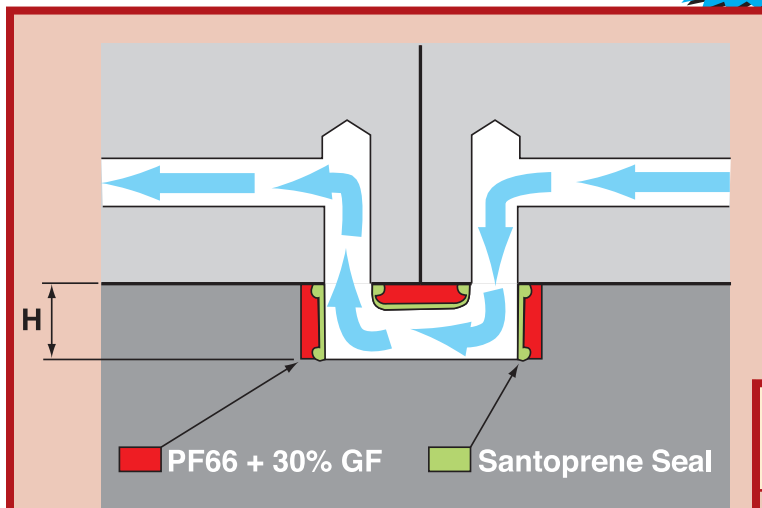


**NEW**

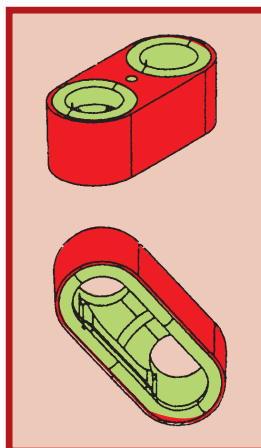
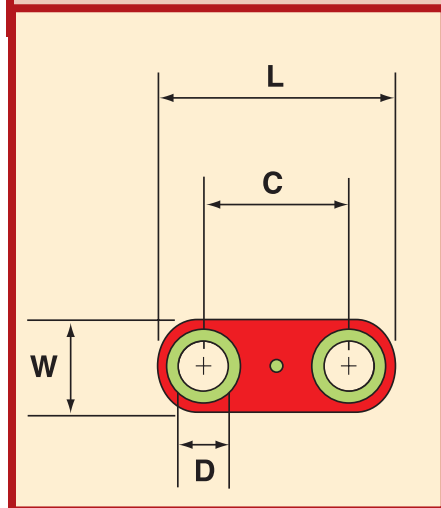


New water Flow Links from DMS-Diemould

- Easily connect water through your cavities without the need for complicated water lines.
- Simply machine a small pocket in between your cavities and fit the Flow Links as required.

Catalog Number	D	C	L	W	H
FL1/4X5/8	1/4	5/8	1-3/32	1/2	3/8
FL5/16X3/4	5/16	3/4	1-1/4	9/16	7/16
FL3/8X3/4	3/8	3/4	1-27/64	5/8	1/2
FL1/2X7/8	1/2	7/8	1-9/16	3/4	5/8

- Structure manufactured from 30% GF Nylon with a Santoprene overmoulded seal.
- Capable of withstanding operating temperatures up to 110° C.
- Maximum working pressure 10 bar.



Catalog Number	D	C	L	W	H
FL06X16	6	16	28	12	9.7
FL08X18	8	18	32	14	11.8
FL10X20	10	20	36	16	12.7
FL12X22	12	22	40	19	15.8

## Safety Clips



- Prevents accidental release of waterline couplers/sockets
- Color coded for hot or cold
- Red for hot water lines
- Blue for cold water lines

CATALOG NUMBER	FITS COUPLER SERIES	COLOUR
SC200-B	200 (1/4" flow)	Blue
SC200-R	200 (1/4" flow)	Red
SC300-B	300 (3/8" Flow)	Blue
SC300-R	300 (3/8" flow)	Red
SC500-B	500 (1/2" flow)	Blue
SC500-R	500 (1/2" flow)	Red

***Fits most water couplers on the market.***

(Parker, JiffyTite (DME), etc.)